

Program Summary:

This addition of three classrooms with service spaces to a former church building adds to the lower grade campus for a French Immersion school.

Program Statement:

Each of the three classrooms in this edge-of-town/country project references historic one-room schoolhouses or vernacular red barn structures found in the context. These classrooms combine to create a “village” of modern residential-scale spaces that aspire to be more than just an efficient container for students during the school day. The project aims to create a blend of modern architecture and traditional elements and massing, offering a nurturing and stimulating environment that creates a special and culturally significant learning experience for children.

The 90-degree angle in plan at the entry is carried through the design in some walls for better acoustics and angled suspended lights for a more dynamic environment. The gabled roofs are solar-oriented to accommodate solar panels with the most efficient angles for electricity production. Stripes of white polycarbonate windows illuminate the interiors, creating a better learning environment using natural light.

This forward-looking campus addition is designed to immerse students in the linguistic and cultural heritage of Francophone Louisiana, while also contributing to the vibrant tapestry of the past and present of its local community.

A-160.01

Building Area: (sf)
2,387 SF

Cost per Square Foot:
\$222

Construction Cost
\$529,000

Date of Completion:
August 2023

A-160.02

The classrooms are nestled into their landscape, respectful of the historic context of their small community.

The building is clad in a rainscreen to provide enhanced protection for the building's interior from South Louisiana's wet climate by creating an 'umbrella' effect on the building envelope.

Wood-composite panels and battens create a rhythm that walks along the facades of the classrooms. This plays off the board-and-batten cladding commonly encountered on barn buildings in the area.

Polycarbonate strips are distributed around the building in a bold striated rhythm. These increase the amount of light admitted into the building and allow the interior to gently glow, making this educational project a beacon and a landmark.

The polycarbonate material's translucency also puts the structure of the building on display, enhancing the project as a teaching tool.



A-160.03

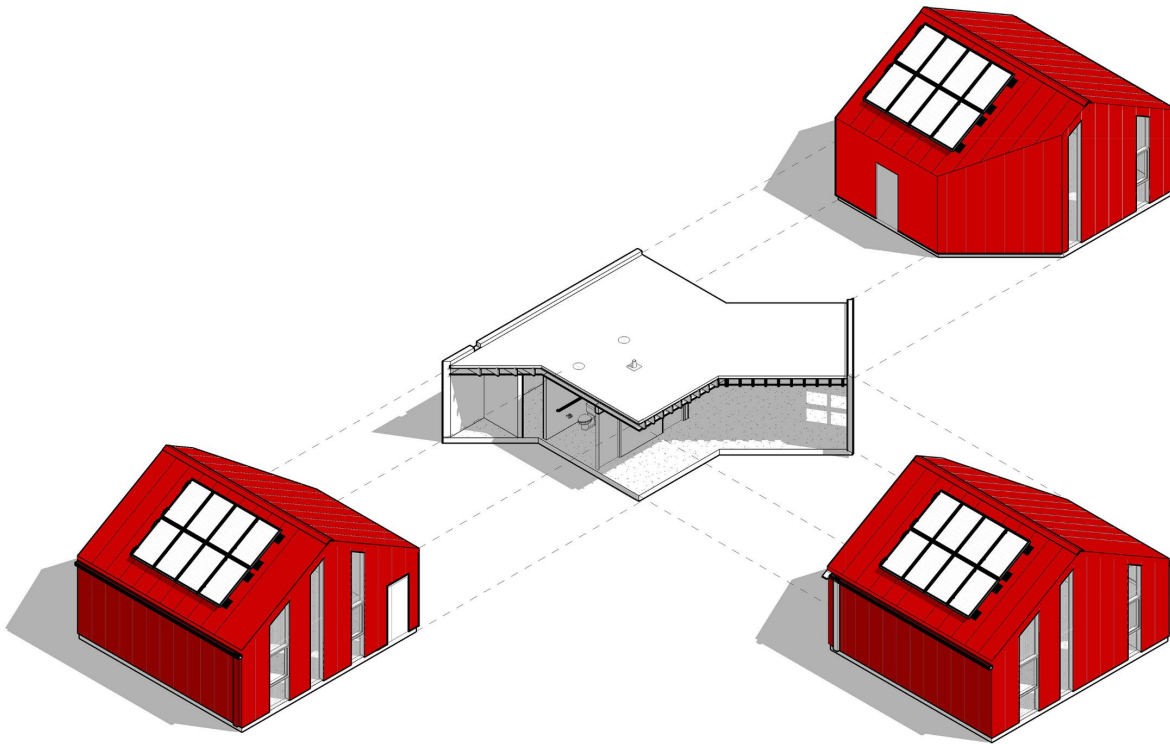
The massing breaks down the scale of the building as a whole, allowing each classroom to be read as its own entity, which imparts a subtle sense of individuality to each space.



A-160.04

The massing breaks down the scale of the building as a whole, allowing each classroom to be read as its own entity, which imparts a subtle sense of individuality to each space.

Service spaces, such as a central corridor, restrooms, offices, storage, and custodial spaces, connect the classroom spaces. A covered walkway (visible in photos) connects this addition to its original campus in the former church building.

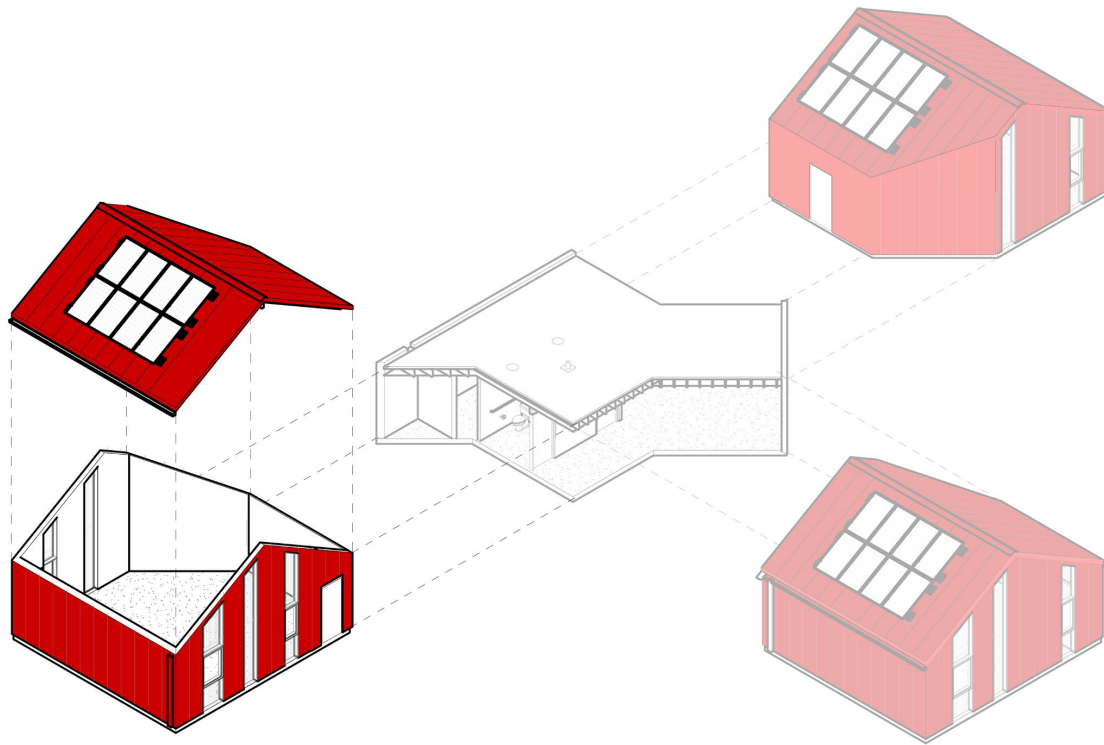


A-160.05

The massing breaks down the scale of the building as a whole, allowing each classroom to be read as its own entity, which imparts a subtle sense of individuality to each space.

Service spaces, such as a central corridor, restrooms, offices, storage, and custodial spaces, connect the classroom spaces. A covered walkway (visible in photos) connects this addition to its original campus in the former church building.

The simple classroom volumes feature cathedraled ceilings below the gable roofs, enhancing the sense of volume throughout the interior spaces.





A-160.06

Large windows bring the outdoors in, providing students with constant visual contact with nature, which is proven to enhance focus and reduce stress.

The school's landscape features local vegetation such as the live oak shown in this photo.

A-160.07

Z-flashing lines up with the top and bottom plates that show through the polycarbonate.

Window openings are operable to introduce welcome fresh air into the classrooms during the temperate months.



A-160.08

Slopes in section join angles in plan to create complex geometries in the classroom spaces. Suspended light fixtures float in the 'sky' of the classrooms, augmenting the abundant natural light from the windows and polycarbonate panels. The result is stimulating interior spaces that are filled with light.



A-160.09

Exposed wood studs are visible within the polycarbonate panels at the left side of this photo.

All classrooms are equipped with smartboards and markerboards for state-of-the-art education.





A-160.10

ROYGBIV rainbow carpet tile makes the floor into an additional seating, learning, and playing surface and adds a range of color to the classrooms. The quarter-turn configuration creates a sense of rhythm, allowing the carpeting to dance across the floors.



A-160.11

The polycarbonate panels stretch from floor to ceiling, illuminating the entire volume of the classroom interiors. This enhances the sense of height and expansiveness in the learning environment, encouraging the growth and development of the children who activate it.



A-160.12

The combination of contextual massing and modern detailing results in a “modern vernacular” architecture that creates a sense of play, exploration, and flight for children, creating a dynamic learning environment that complements the energy they bring to class each day.

A-160.13

More than just a school, this project is a cultural hub that celebrates the French heritage of the region. Through thoughtful architectural design and a commitment to cultural education, the school enriches the lives of its students and the community, ensuring that the vibrant traditions of the Francophone world continue to thrive in south Louisiana through a building that is aware of the past while pushing into the future.



Project Name:
École Saint-Landry Early Childhood Campus

Project Location:
Sunset, Louisiana

Owner/Client:
Sunset French Immersion School
Foundation

Architect(s) of Record:
(names and addresses)
SO Studio
500 Johnston Street, Suite 102
Lafayette, Louisiana 70501

Project Team:
Stephen J. Ortego, AIA
Nouf AlBalushi, Assoc. AIA
André Carr
Michael Ball, AIA

Landscape Architect:
NA

Consultants:
Innovative Structural Consultants, LLC
Houston, TX

General Contractor:
Lambright Construction
Lafayette, LA

Photographer(s):
(please list which specific slides get credited to each
photographer(s) listed).
02, 06, 07, 09, 10, 11, 13:
Sara Essex Bradley
03–05: SO Studio
08, 12: Cameron Theyard

A-160.x

Credit Slide

This slide will not be seen by the judges. It replaces what in past years has been in the sealed envelope.

Please fill out the information requested to the left. As with other slides please set the correct Entry Number above; OK to leave slide# as “x”

Some of this information will be added to the slides when used for the Awards Presentation at the AIA Louisiana Convention.

Note: on this slide if you run out of space please adjust font size as necessary or move more information to the second column.

Please submit 2 Power Point Submissions online as indicated on the instructions sent to you with your entry number (one w/credit slide and one without).