

Program Summary:

A new 80,000 square foot, two-story high school on a 10 acre site with a separate 9th grade wing, 10-12 grade wings, STEM, music, art, athletics, family & consumer science, and library.

Program Statement:

Inspiration, innovation, economy, and security were key drivers that led to the design of this 80,000 square foot high school. Through the interaction with faculty, staff, administration, and board members, a program of spaces for 600 students was established. This program includes: one monumental front entrance, a commons area that also serves as a cafeteria or a performance space, a serving line that doubles as concessions to the adjacent gymnasium, a rear entrance for events, a 9th grade wing, 10-12 grade wings, an acoustically-isolated band room, choir room, art studio, STEM and media production labs, a family & consumer sciences suite, and a centrally located library.

With the economy and supply chain hampered by a pandemic and two hurricanes, the construction techniques chosen were key to the project's success. Local trades and readily available materials delivered on-time completion without sacrificing quality.

Interactive spaces facilitate engagement while access control offers security. Natural lighting, durable yet welcoming finishes, and monumental spaces all help provide for a healthy learning environment revolving around the dignity of the student.

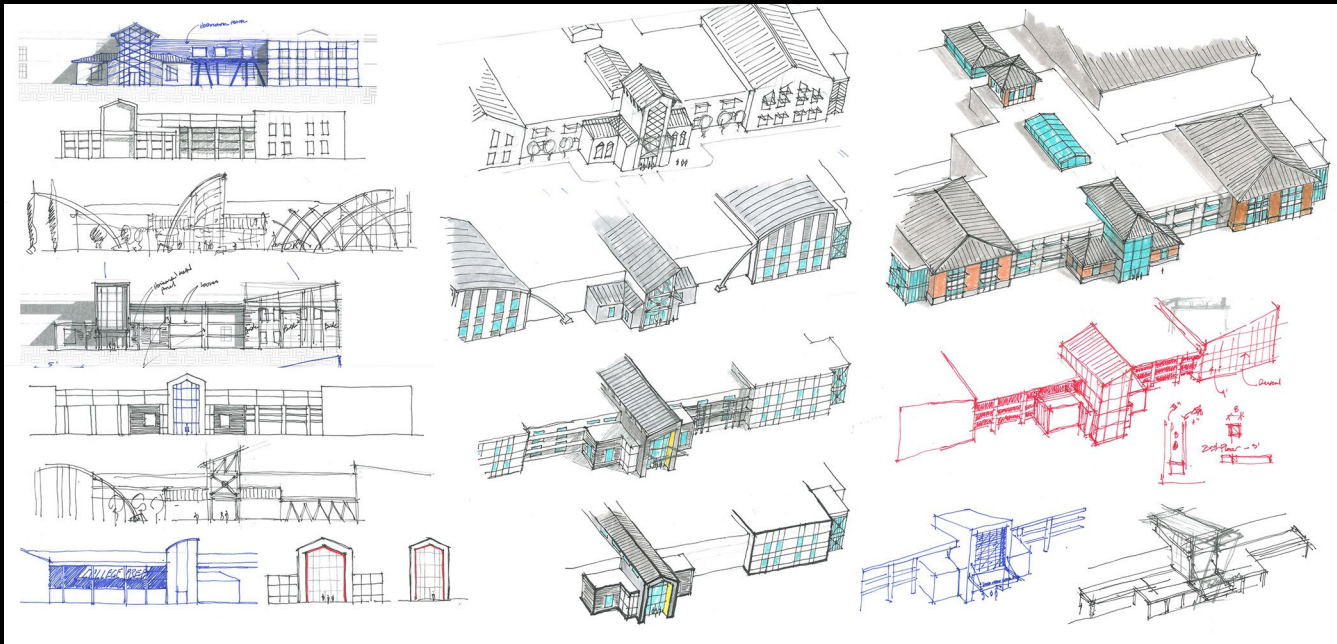
A340.01

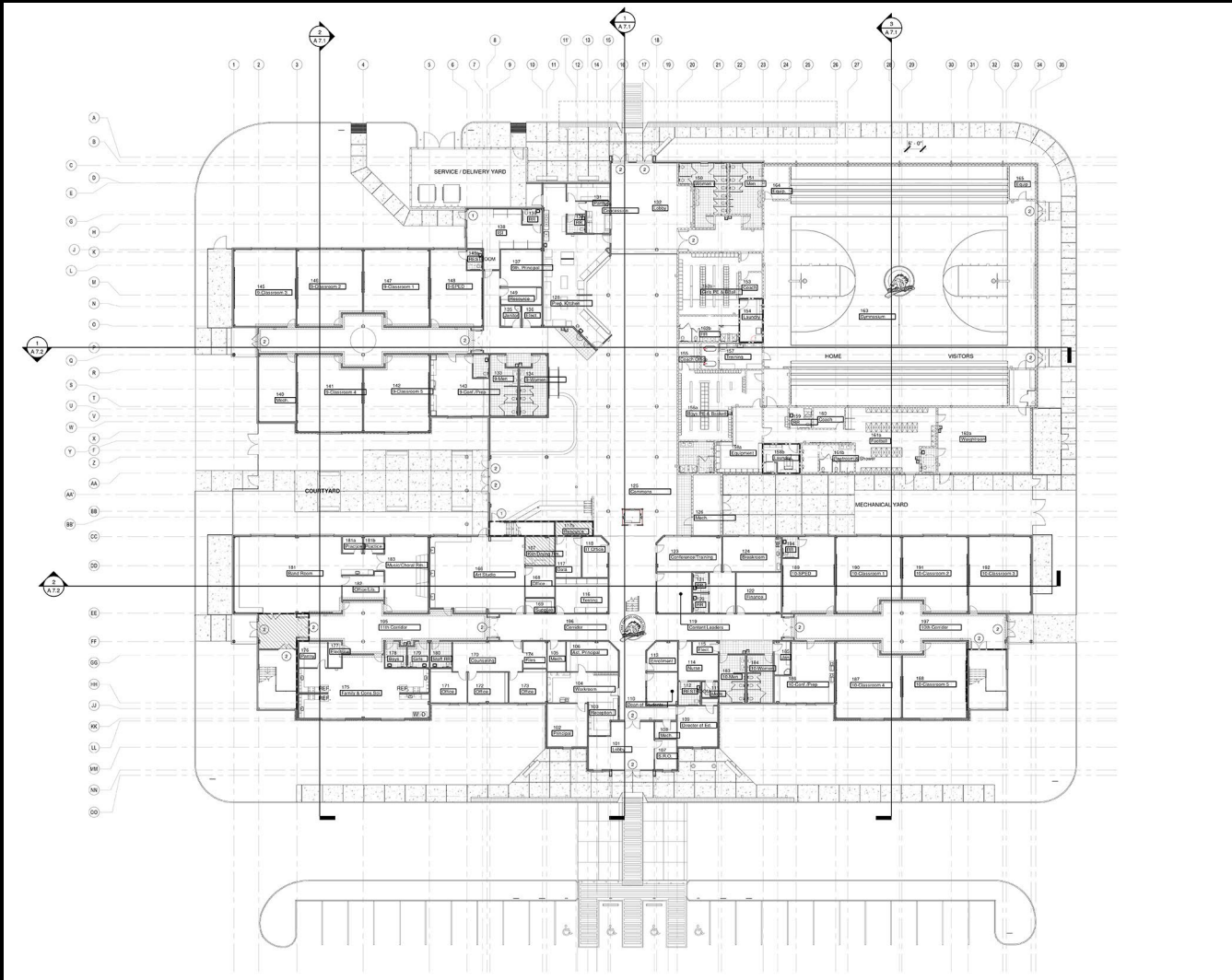
Building Area: (sf)
80,000 sf

Cost per Square Foot:
\$210.75/sf

Construction Cost
\$16,860,000

Date of Completion:
11/15/21





A-340.04

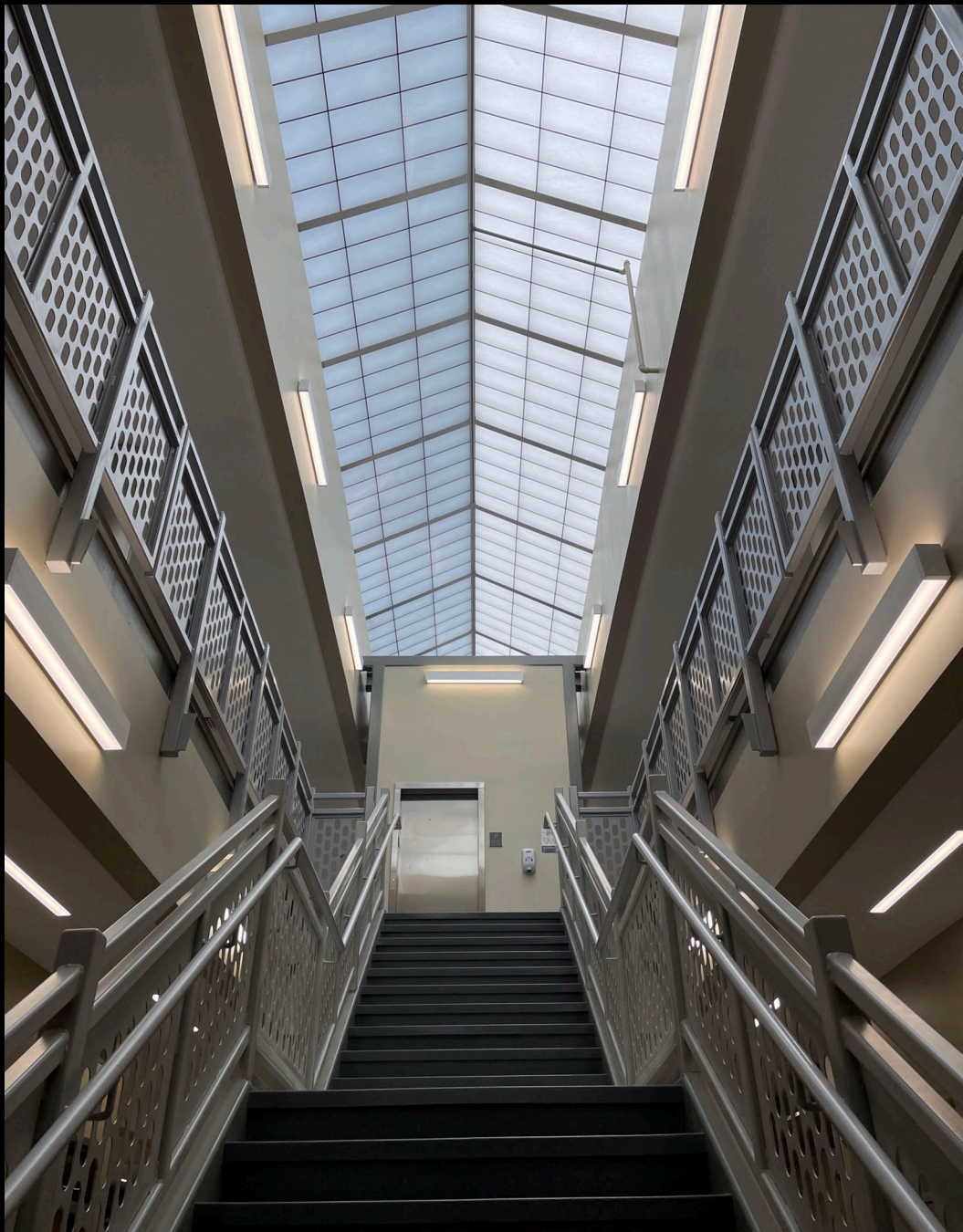


A-340.05



A-340.06





A-340.07

A-340.08



A-340.09



A-340.10



A-340.11



A-340.12



A-340.13

