

## Program Summary:

Iconic restaurant renovated to create a new experience while maintaining historic elements. Each room offers a unique ambiance, with common motifs tying the design together.

## Program Statement:

An iconic restaurant with over 40 years of history in the community, our team completely redid the interior to create a new experience. We worked hard to stay true to the original brand elements, embracing the culture, colors, and history of the space. The goal was not to detract from the nostalgia, but add to it.

The Entry Hall pays homage to the restaurant's history with photos from years past and hints at new design elements specific to each space, acting as a guide to the restaurant itself. From the hall you catch glimpses into the dark and moody Hallelujah Bar, flickering with light and embodying elements found in a 1920's New Orleans Jazz Bar. At the restaurant's center, The Atrium Bar's existing elements were brightened and paired with chinoiserie materials creating the experience of an old Southern greenhouse. Walk through a hidden door in the Atrium, and you're transported into a space reminiscent of secret library - The Tigre Lounge is layered with rich textures and steeped in history.

Functionally, the new layout creates a wide range of opportunities for the restaurant and diners, with new event spaces, private dining rooms, and multiple options for romantic drinks at a bar or fun dinners with friends. We embraced the community sentiment towards the space, so diners can still recognize "the table their parents got engaged at," yet it's completely elevated and made fresh, setting it up for the next 40 years.

# IA35.01

Building Area: (sf)  
**16,266**

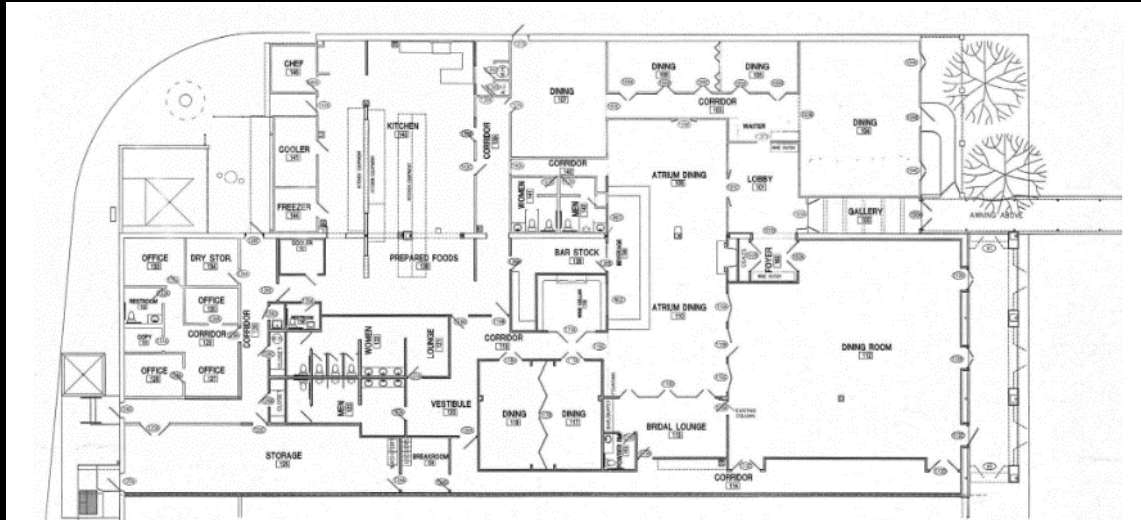
Cost per Square Foot:  
**\$64.42**

Construction Cost  
**1,047,780**

Date of Completion:  
**4/30/22**

# IA35.02

From the beginning of this project, we knew that working with a 16,000sf restaurant gave us the unique opportunity to embrace a wide variety of designs. The goal was to create a series of unique spaces that were all tied together by a common thread, so that despite the huge differences guests will still feel cohesion when walking through the restaurant.



Original Floor Plan



Atrium Bar

# IA35.03

When guests first enter, they walk down a grand entry hall that includes little pieces of each room, hinting at the spaces they're about to experience. It also introduces the brand's blue, which carries throughout the entire restaurant.

At the end of the entry hall is the new lobby and host area. The graphic behind the neon sign is an image of the original restaurant, paying homage to history. Floral motif wallpaper on the ceiling pulls together the different color palettes found throughout the restaurant, and wainscoting is introduced which continues throughout.



Entry Hall Before



Lobby Before

# IA35.04

The before picture of the Atrium Bar is indicative of the state of the entire restaurant before our renovation, with much of the decor having been untouched since it was originally built over 40 years ago.

We diligently worked to repurpose elements that could be updated, such as the lattice work on the ceiling, while making the space feel completely refreshed and new.

The Atrium Bar plays off of a Southern greenhouse, made unique with the incorporation of chinoiserie elements.

The light fixtures are reminiscent of bird cages, and the brass elements of the bar are softened by the wallpaper and colors.



Before



Atrium Bar - Bar Elevation

# IA35.05

The fabric of the chairs in the Atrium Bar includes blue stripes, tying back in the restaurant's color, and the tables featuring a custom gold edge detail.

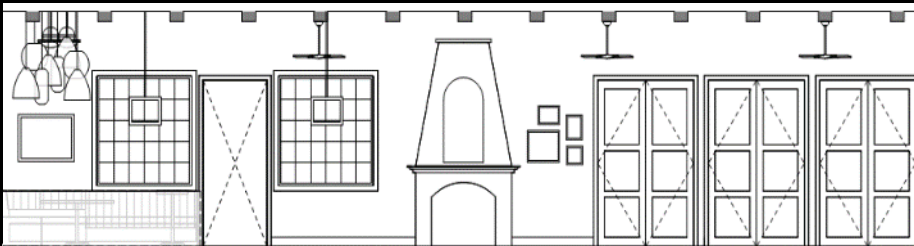


The wall originally featured a window looking into the neighboring room. We replaced it with a custom made antique mirror, reflecting the design of the original and remaining windows.

An original fireplace was updated with a limewash finish, brightening it to match the space.



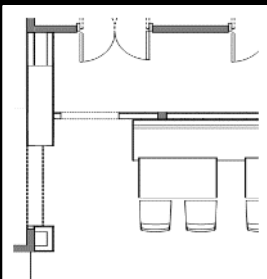
The goal was to weave in common threads throughout all the spaces, finding the balance of history and new, and making everything feel cohesive.



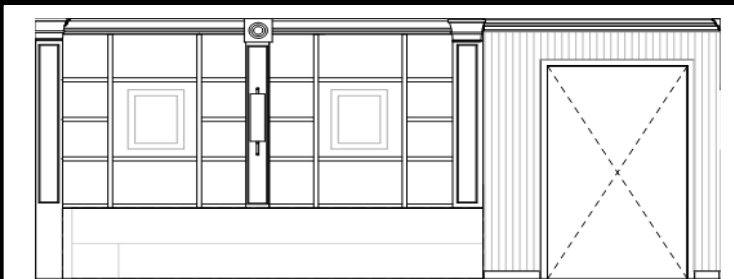
Atrium Bar - Fireplace Elevation

# IA35.06

A custom pocket door divides the light and airy Atrium Bar from the adjacent Tigre Lounge's rich luxury. When open, guests can freely move back and forth, but when pulled closed with the brass tiger handle, the entrance is disguised with bookshelves on the Tigre Lounge side and a wine display on the Atrium Bar side.



Tigre Lounge - Entry



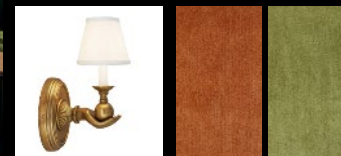
Tigre Lounge - Entry Elevation



# IA35.07

The Tigre Lounge is designed to feel like a hidden library, giving visitors a feeling of being behind the curtain in a room layered with history of LSU legacies. A stark contrast to the bright Atrium Bar, the common blues and golds anchor the room and make it feel like it still belongs. A cowhide on the floor and other elements play off of the mascots of LSU's competitors. The books and other decor items on the custom designed shelves were sourced from antique stores and LSU's campus. Striking tiger and peacock wallpaper surrounds the private door to the kitchen.

The space communicates luxury, with custom millwork, a fireplace, and unique lighting and fabrics.



# IA35.08

The standout feature of the Tigre Lounge is a series of custom portraits of LSU icons. We were inspired by old paintings of philosophers, and worked with a graphics team to reimagine recognizable faces like Kim Mulkey and Joe Burrow in the style.

Custom millwork elevates the space, creating perfect nooks for the portraits and other historic treasures.





# IA35.09

The Hallelujah Bar is inspired by New Orleans Jazz, and music motifs can be found in the lighting, art, and wall sconces.

The custom bar's shape is inspired by the french balconies and wrought iron awnings in new orleans.

Antique mirrors are fitted into the wainscot, adding another layer to the design.





## IA35.10

Wainscoting continues through this room, another element tying it to other spaces in the restaurant and elevating the space with an art deco influence.

Through the arched windows, you can look back into the entry hallway.

# IA35.11

From the bright and inviting entry and the airy greenhouse Atrium, to the bold and saturated hues of the Tigre Lounge and Hallelujah Bar, we carefully curated each space to convey it's own feeling, yet they come together seamlessly to tell a cohesive story.



ENTRY



ATRIUM BAR



TIGRE LOUNGE



HALLELUJAH BAR