

## Program Summary:

A new amphitheater and path network for a summer camp for children with special needs.

## Program Statement:

The design task was to create a gathering space for ceremonies, talent shows, and other events that mark the timeless tradition of summer camp.

The project maximizes the views across the lake, while nestling into a wooded cove to avoid seeing and hearing the nearby highway.

The nature of the users, coupled with the programmatic needs of the project, led to a concept centered around transformation. The bravery required for these campers to leave home for their first time away from parents, or the courage required to share their talents on stage is transformative, and invites them to grow into more capable versions of themselves. To celebrate these moments, we pursued an expressive roof that, as one approaches, seems to transform. Ultimately, it depicts its namesake: Imago, the stage when a butterfly emerges from its cocoon.

The asymmetrical plan and radial seating prioritize simplicity and flexibility. A wall of firewood flanks the entry and fuels the firepit at the edge of the stage, and a lowered guardrail creates an ideal fishing spot.

The playful steel roof structure is fabricated from reclaimed steel from the oil and gas industry. Nearly a mile of material was used to fabricate the twisting trusses that allow the form of the roof to transition from white to red.

At night, the illuminated red roof radiates into camp, reminding campers of their time there, creating a unique beacon across the lake, and adding to the magic and memory of this special place.

# SP-140.01

Building Area: (sf)  
1500

Cost per Square Foot:  
\$20/sf

Construction Cost  
\$30,000

Date of Completion:  
5/20/23

# SP-140.02

The design task was to create a gathering space for ceremonies, talent shows, and other events that mark the timeless tradition of summer camp.



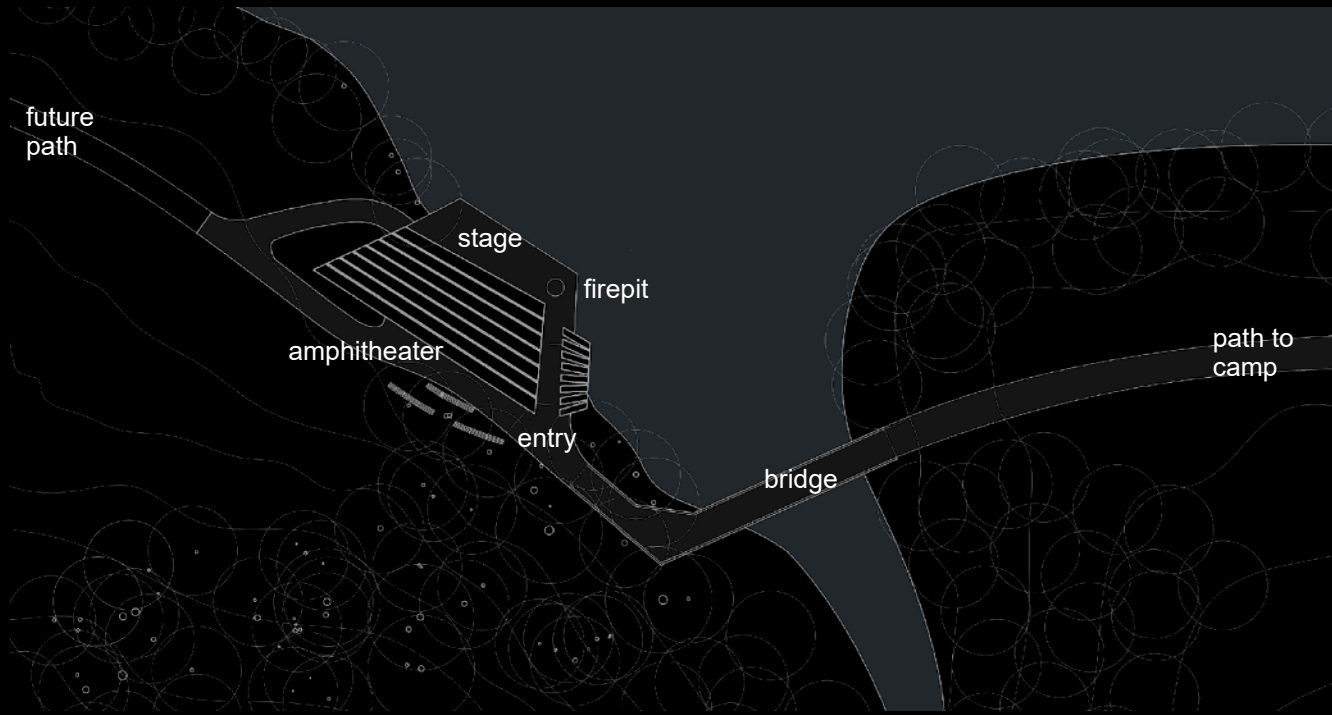
property map



existing site

# SP-140.03

The project maximizes the views across the lake, while nestling into a wooded cove to avoid seeing and hearing the nearby highway.



site plan



proposal rendering

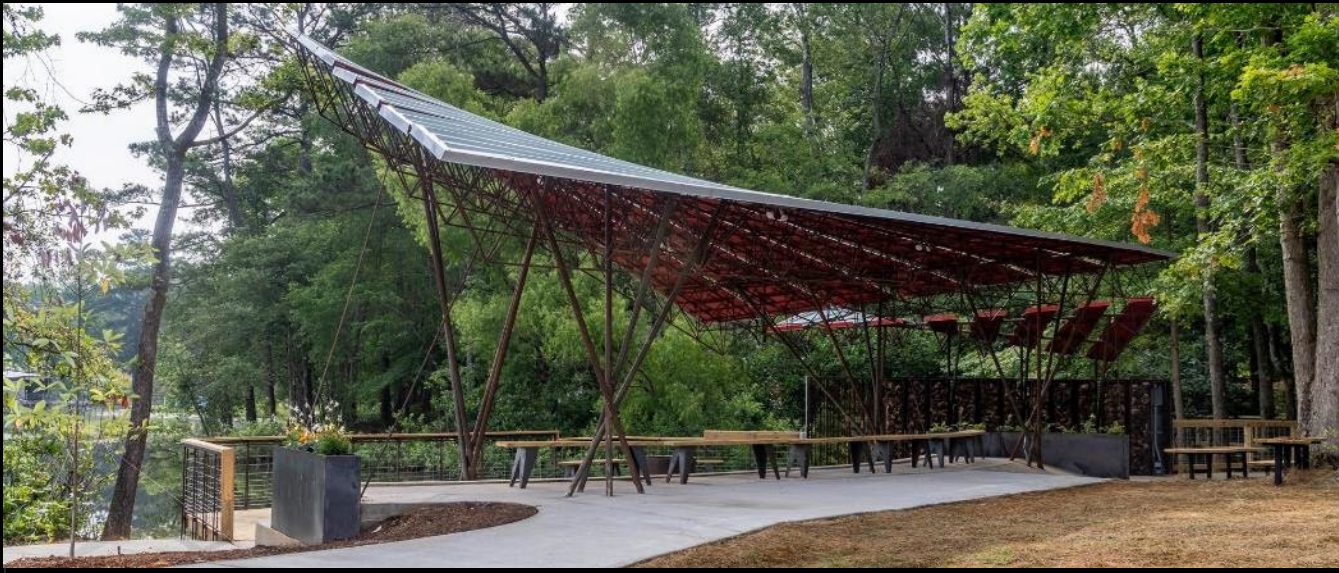
# SP-140.04

The nature of the users, coupled with the programmatic needs of the project, led to a concept centered around transformation. The bravery required for these campers to leave home for their first time away from parents, or the courage required to share their talents on stage is transformative, and invites them to grow into more capable versions of themselves.



## SP-140.05

To celebrate these moments, we pursued an expressive roof that, as one approaches, seems to transform. Ultimately, it depicts its namesake: Imago, the stage when a butterfly emerges from its cocoon.



## SP-140.06

The asymmetrical plan and radial seating prioritize simplicity and flexibility. A wall of firewood flanks the entry and fuels the firepit at the edge of the stage, and a lowered guardrail creates an ideal fishing spot.



## SP-140.07

The playful steel roof structure is fabricated from reclaimed steel from the oil and gas industry. Nearly a mile of material was used to fabricate the twisting trusses that allow the form of the roof to transition from white to red.



SP-140.08





SP-140.09





## SP-140.10

At night, the illuminated red roof radiates into camp, reminding campers of their time there, creating a unique beacon across the lake, and adding to the magic and memory of this special place.