

Program Summary:

112,500 SF, 120-key hotel including full restaurant, café, bar and lounge, meeting facilities and retail space as well as 53,000 SF sub-grade parking structure.

Program Statement:

The hotel is envisioned as a beacon of activity for its neighborhood. The 112,500 square-foot, 120-key hotel includes a full restaurant, café, bar and lounge, meeting facilities and retail spaces which encircle an extensive outdoor courtyard on top of a sub-grade parking structure. Each of these amenity spaces are designed to open into the lush courtyard which offers seasonal variation and encourages year-round use for guests to connect directly with nature.

Contrasting the transparent base, the exterior façade of the building's upper portion is a combination of charred wood and glass which is intended to serve as a monolithic wrapper, unifying the building's dynamic form. Utilizing an ancient Japanese technique called "shou-sugi-ban," the charring of the wood surface creates a natural resistance to rot, insects and decay. This process creates a unique texture and expression for the building which pays tribute to the university's annual bonfire, acknowledging the project's local context and community.

The reserved palette of materials - cast-in-place concrete, glass and wood - is meant to be raw, authentic and refined. Carefully selected furnishings are designed to create a comfortable, uncluttered and liberated interior. Light wells carve through the corridors and full floor-to-ceiling glass is used in all guest rooms, which washes the interior spaces with generous amounts of natural daylight. The roof-level of the building features large luxury suites each with their own private outdoor balcony, as well as a pool terrace and bar complete with views of campus.

UP-20.01

Building Area: (sf)
112,500 SF (Hotel)
53,000 SF (Sub-grade parking)

Cost per Square Foot:
To Be Determined

Construction Cost
To Be Determined

Date of Completion:
Unbuilt; Estimated Completion 2019

UP-20.02

Street Corner View

Contrasting the transparent base, the exterior façade of the building's upper portion is a combination of charred wood and glass which is intended to serve as a monolithic wrapper, unifying the building's dynamic form.

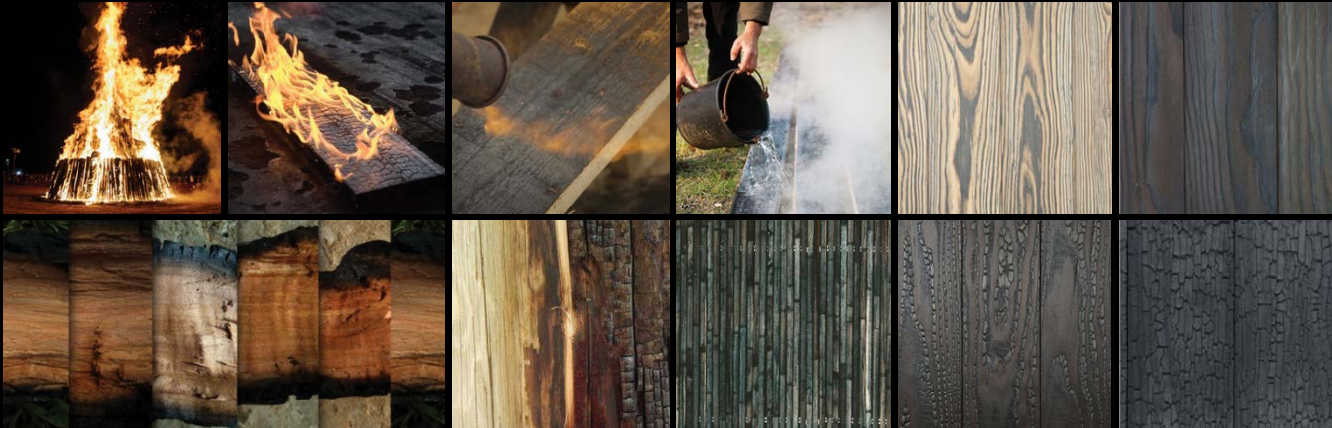


UP-20.03

Shou-sugi-ban Process

Utilizing an ancient Japanese technique called “shou-sugi-ban,” the charring of the wood exterior creates a natural resistance to rot, insects and decay.

This process creates a unique texture and expression for the building which pays tribute to the university’s annual bonfire, acknowledging the project’s local context and community.



UP-20.04

Lobby View

As guests enter the main lobby, they are immediately greeted by views into the extensive landscaped courtyard within.



UP-20.05

Courtyard View

Each of the ground-level amenity spaces are designed to open into the lush courtyard which offers seasonal variation and encourages year-round use for guests to connect directly with nature.



UP-20.06

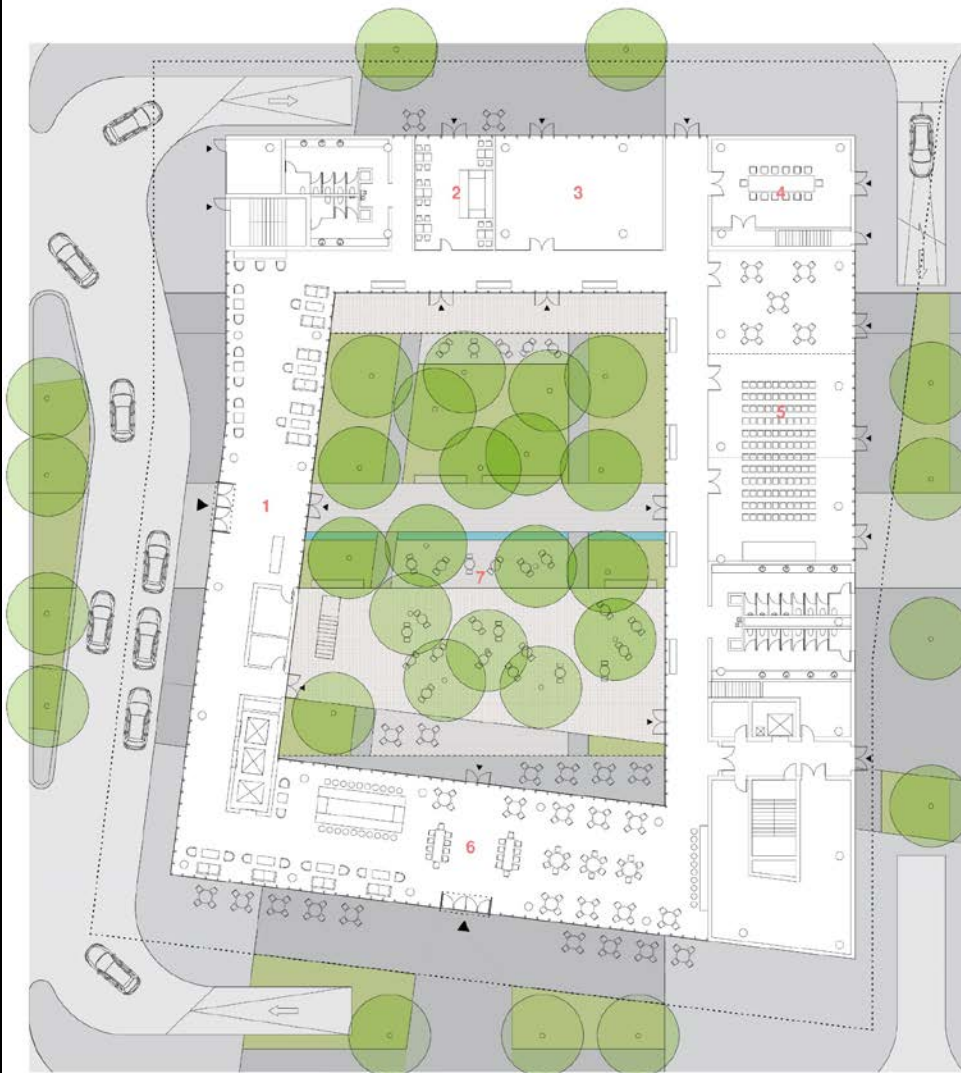
Rooftop Terrace View

The roof-level of the building features large luxury suites each with their own private outdoor balcony, as well as a pool terrace and bar complete with views of campus.



UP-20.07

Floor Plan: Level 1



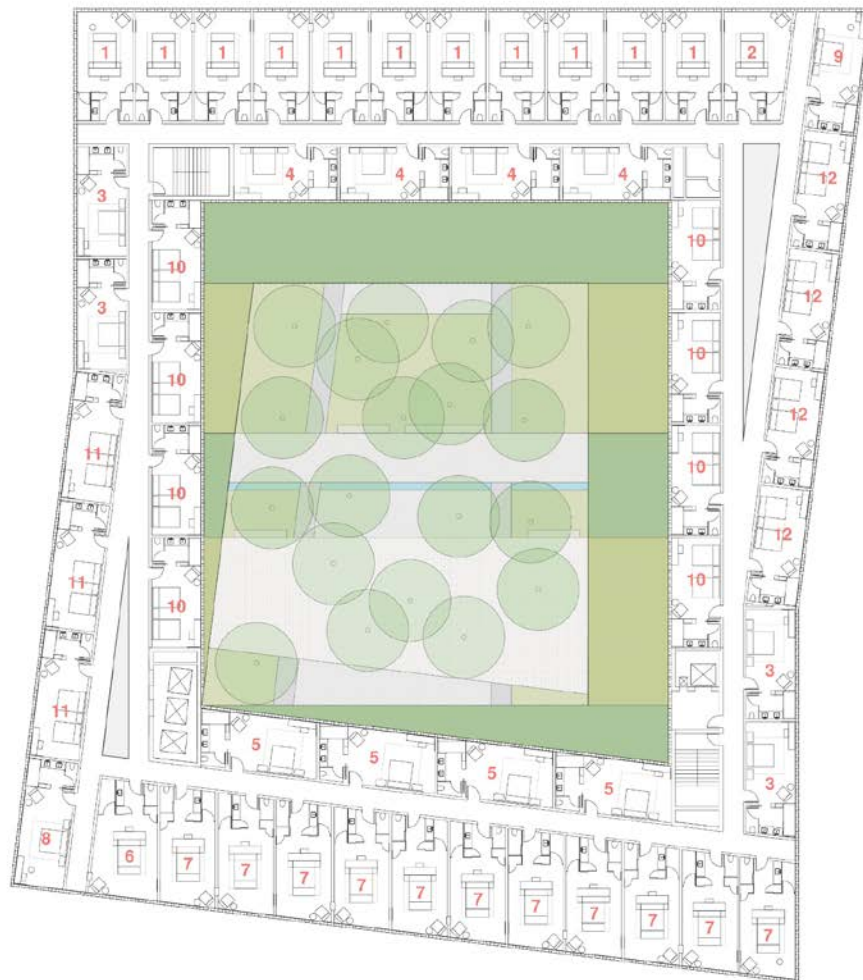
LEGEND

- 1 Lobby / Lounge: 2,356 ft²
- 2 Cafe: 550 ft²
- 3 Retail: 1,184 ft²
- 4 Board Room: 761 ft²
- 5 Meeting Rooms: 2,322 ft²
- 6 Restaurant + Bar: 3,900 ft²
- 7 Courtyard: 10,830 ft²

0' 10' 30' 60'

UP-20.08

Floor Plan: Level 2



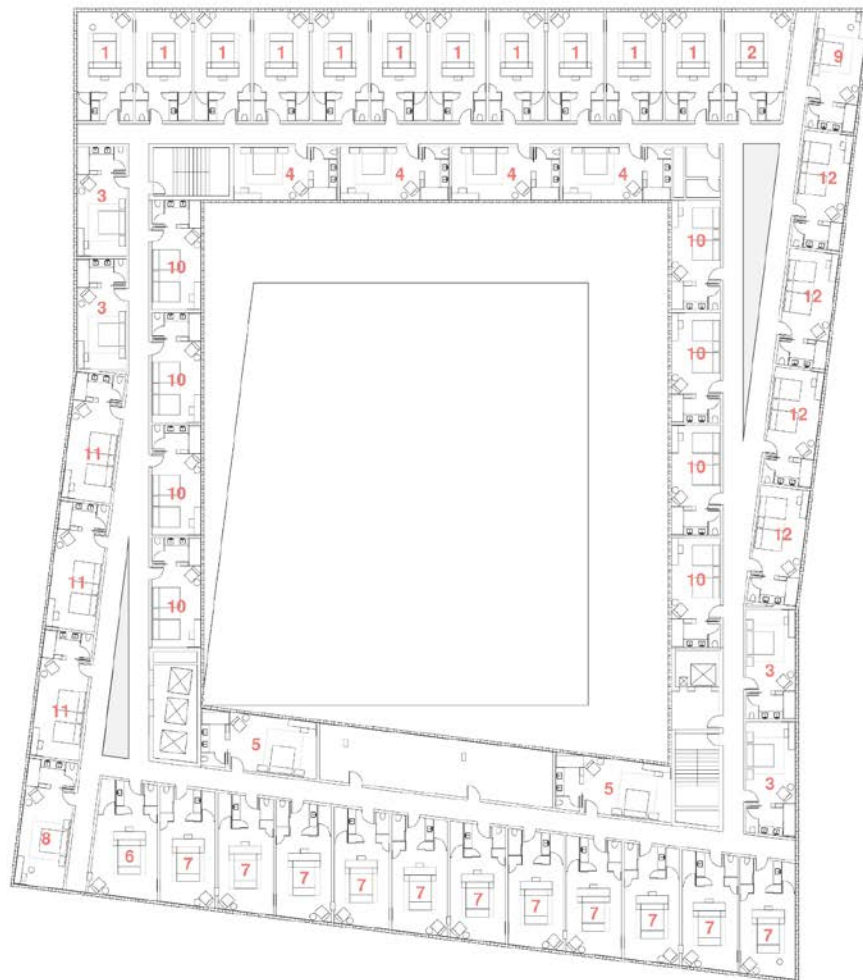
LEGEND

- 1 King Unit (11): 378 ft²
- 2 King Unit (1): 427 ft²
- 3 King Unit (4): 333 ft²
- 4 King Unit (4): 357 ft²
- 5 King Unit (4): 402 ft²
- 6 King Unit (1): 361 ft²
- 7 King Unit (11): 336 ft²
- 8 King Unit (1): 363 ft²
- 9 King Unit (1): 361 ft²
- 10 Queen/Queen Unit (8): 333 ft²
- 11 Queen/Queen Unit (3): 386 ft²
- 12 Queen/Queen Unit (4): 354 ft²

0' 10' 30' 60'

UP-20.09

Floor Plan: Level 3



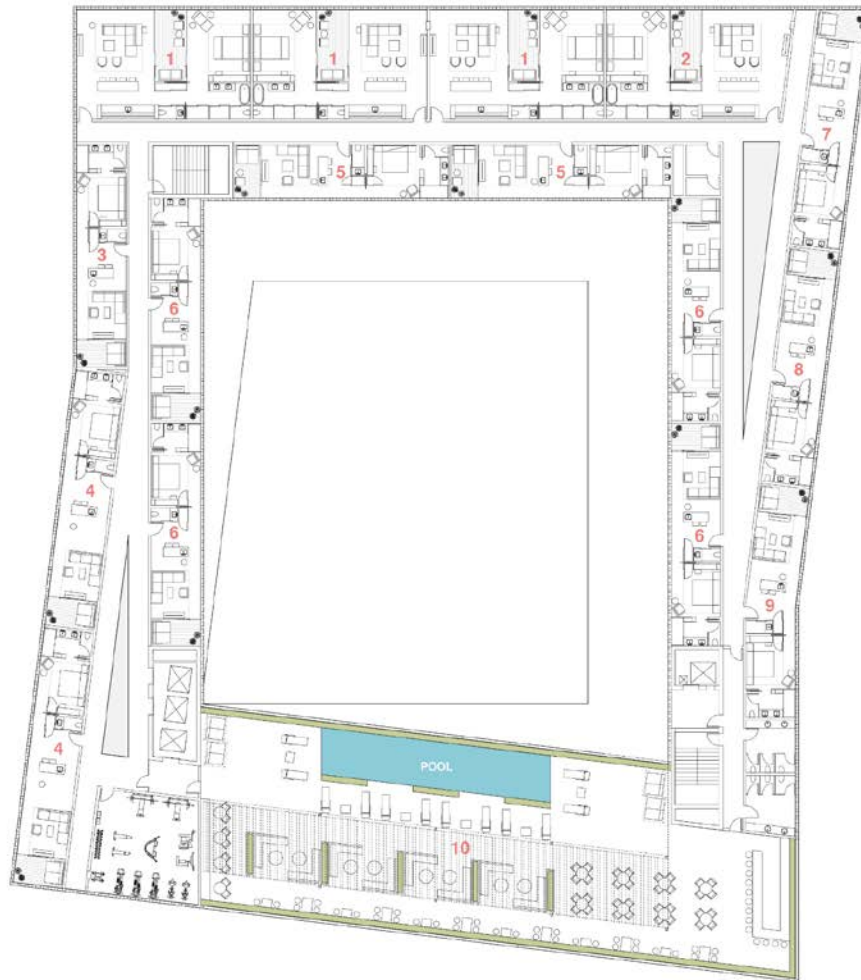
LEGEND

- 1 King Unit (11): 378 ft²
- 2 King Unit (1): 427 ft²
- 3 King Unit (4): 333 ft²
- 4 King Unit (4): 357 ft²
- 5 King Unit (2): 402 ft²
- 6 King Unit (1): 361 ft²
- 7 King Unit (11): 336 ft²
- 8 King Unit (1): 363 ft²
- 9 King Unit (1): 361 ft²
- 10 Queen/Queen Unit (8): 333 ft²
- 11 Queen/Queen Unit (3): 386 ft²
- 12 Queen/Queen Unit (4): 354 ft²

0' 10' 30' 60'

UP-20.10

Floor Plan: Level 4



LEGEND

- 1 Large Suite (3): 1,175 ft²
- 2 Large Suite (1): 1,219 ft²
- 3 Typ. Suite (1): 621 ft²
- 4 Typ. Suite (2): 775 ft²
- 5 Typ. Suite (2): 720 ft²
- 6 Typ. Suite (4): 673 ft²
- 7 Typ. Suite (1): 723 ft²
- 8 Typ. Suite (1): 714 ft²
- 9 Typ. Suite (1): 703 ft²
- 10 Pool + Bar Terrace: 6,191 ft²



UP-20.11

Large Suite Views





UP-20.12

Typical Suite Views

Project Name:
College Station Boutique Hotel

Project Location:
College Station, Texas

Owner/Client:
Confidential (withheld by Client)

Architect(s) of Record:
(names and addresses)
Trahan Architects

Project Team:
Trey Trahan, FAIA
Leigh Breslau, AIA
Brad McWhirter, AIA
Conner Bryan
Sarah Cancienne
Shelby Downs
Yichen Lee
Charles Weimer

Landscape Architect:
Reed Hilderbrand

Consultants:
Rodrigo Vargas Design – Interior Design
Vandever Hospitality Advisors – Project
Management
ARUP – Structural + MEP/FP Engineering
Jensen Hughes – Life Safety Engineering
CiniLittle – Food Service Consultants
Lerch Bates – Vertical Transportation

General Contractor:
To Be Determined

Photographer(s):
(please list which specific slides get credited to each
photographer(s) listed).

All renderings by: ByEncore

Slide 3 photographs courtesy of:
Dion C. McGinnis
Delta Millworks
Jenna Treon

UP-20.X